

SANTERRA
AT RIVERSTONE



A Neighborhood by McCaffrey Homes





Life Is A New Adventure Every Day. Santerra Is The Place To Start.

Santerra is a lot like you, smart, innovative, bright and modern. That's why these homes make you feel so comfortable, inspired and happy. Single level designs make Santerra a great choice at any stage of life. The two-story designs include a first-floor bedroom with bath perfect for older children, in-laws, or guests. Plus innovating ideas such as Idea Rooms and personalizing assure your home will be a perfect match.

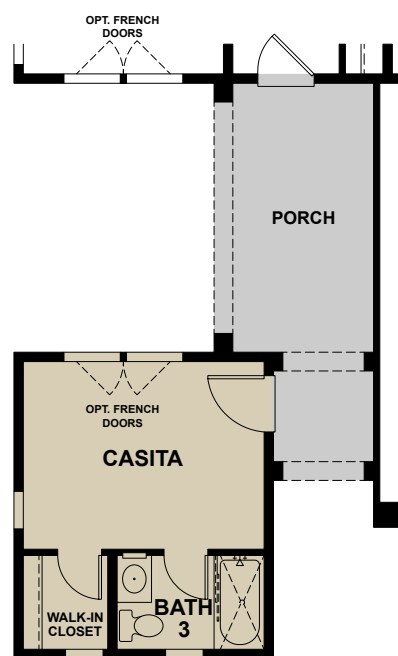
Being surrounded by the visionary master-planned community of Riverstone makes your new home feel complete. Plans for all kinds of recreation amenities make for an active life. The trails, nature preserve and outdoor adventures offer the pleasure of a convenient life. Residents will be able to enjoy The Lodge, the first of several clubhouses to be built, offering flexible spaces for gathering and events, and much more. The proposed Riverstone Farms is anticipated to yield all sorts of great-tasting goodness. Explore where life at Santerra takes you.



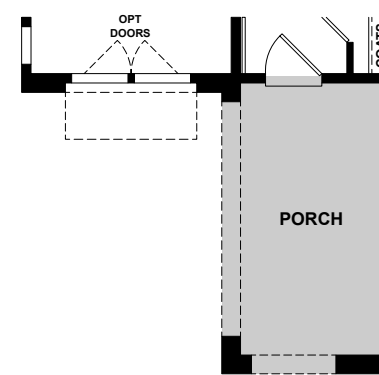
RESIDENCE ONE

Single-Story Design
Approx. 1,598 to 1,824 Sq. Ft.
3 to 4 Bedrooms, 2 to 3 Bathrooms
Deeper 2-Car Garage

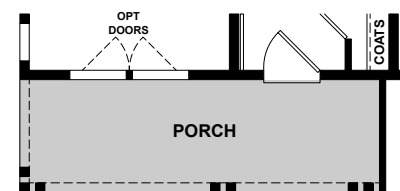
*Den at Bedroom 3
Casita with Bath at Front Yard*



Optional Casita
with Bath



Spanish Elevation



Country Elevation



Spanish



American Traditional



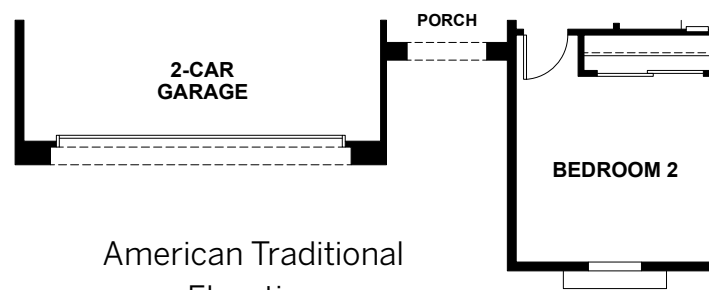
Country



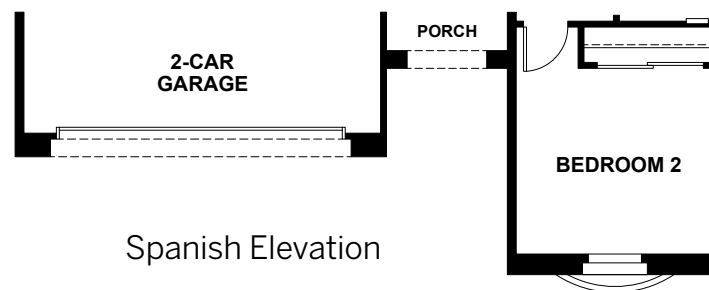
RESIDENCE TWO

Single-Story Design
Approx. 1,846 Sq. Ft.
3 Bedrooms, 2 Bathrooms
2-Car Garage with Storage Area
Oversized L-shaped Covered
Outdoor Room

Option:
Den at Bedroom 3



American Traditional
Elevation



Spanish Elevation



Spanish



American Traditional



Country



McCaffrey Homes reserves the right to change floor plans, dimensions, exteriors, specifications, included amenities, and product types without prior notice or obligations. Architectural illustrations are artist conceptions and are not necessarily to scale and are not intended to be an actual depiction of such items. Pictured homes are models with some features, furnishings and landscaping not included in the purchase price. All square footages stated are approximate. Actual square footage will vary.

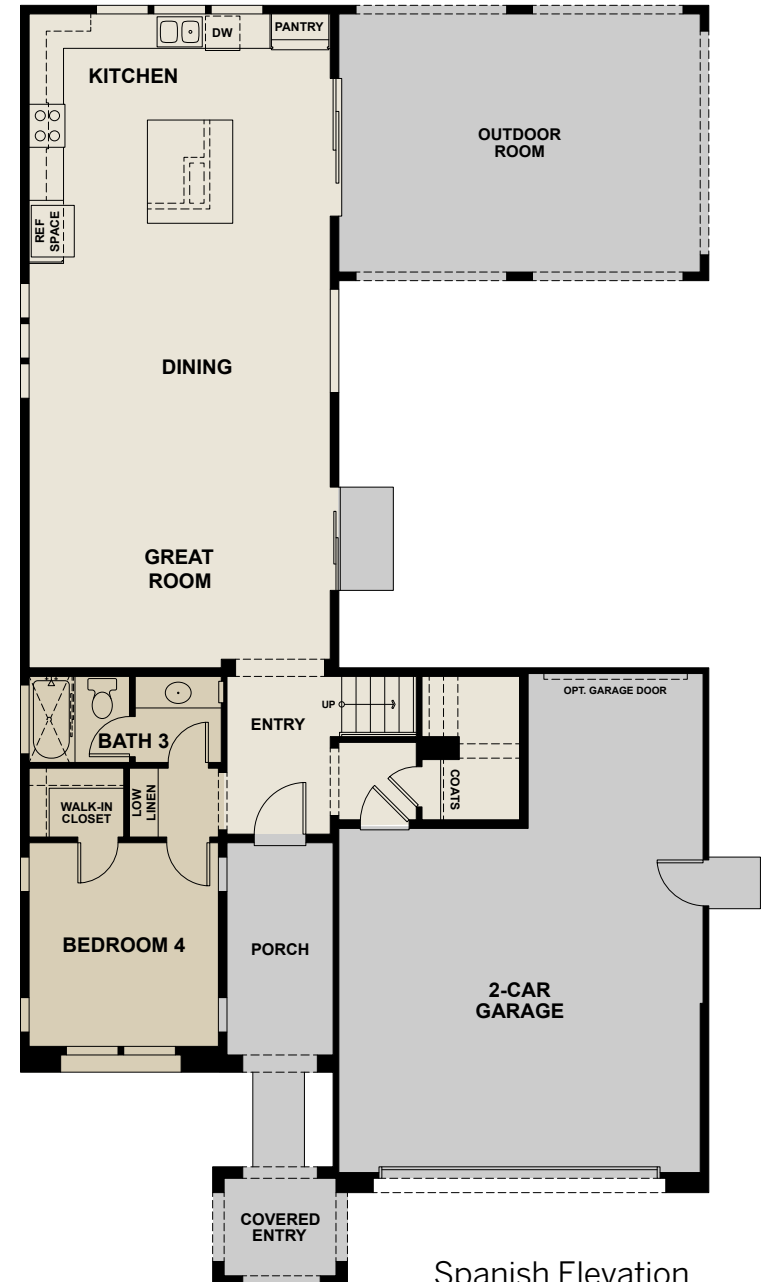
RESIDENCE THREE

Two-Story Design
Approx. 2,180 to 2,367 Sq. Ft.
4 Bedrooms, 3 to 3.5 Bathrooms
Side Courtyard
Super 2-Car Garage
Large Covered Outdoor Room

Options:
*Downstairs Junior Suite
with Bath at Bedroom 4
& Powder Room at Entry
Idea Room at Back Yard*



Optional
Junior Suite
With Powder Bath



Spanish Elevation
(AS MODELED)

FIRST FLOOR



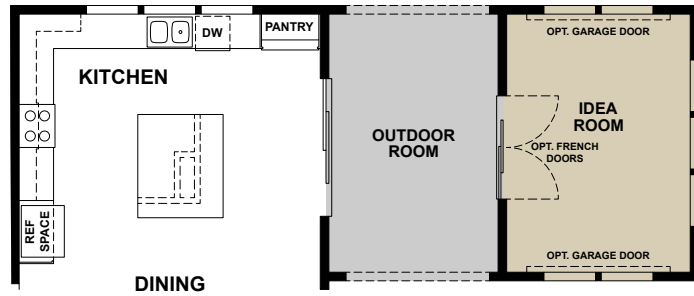
Spanish



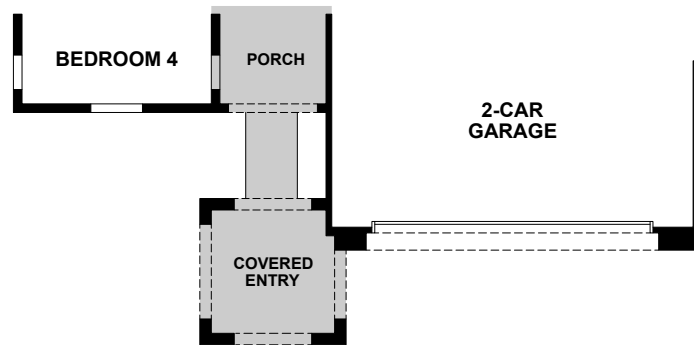
American Traditional



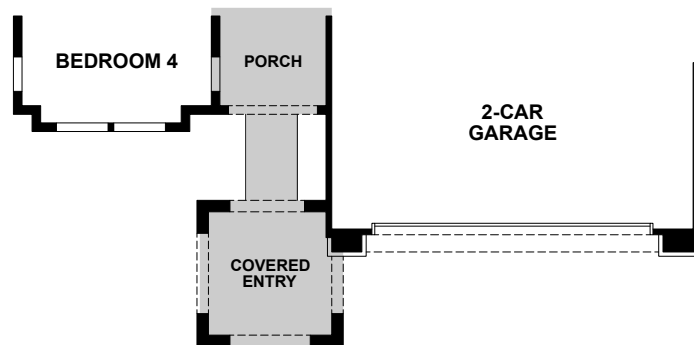
Country



Optional Idea Room



Traditional Elevation



Country Elevation



SECOND FLOOR

RESIDENCE FOUR

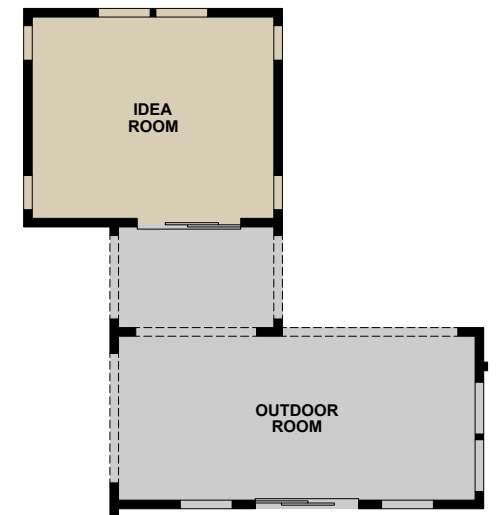
Two-Story Design
 Approx. 2,658 to 2,880 Sq. Ft.
 4 to 5 Bedrooms, 3 to 3.5 Bathrooms
 Oversized 2-Car Garage
 Large Covered Outdoor Room

Options:
 Downstairs Junior Suite
 with Bath at Bedroom 4
 & Powder Room at Entry
 Bedroom 5 at Loft
 Idea Room at Back Yard

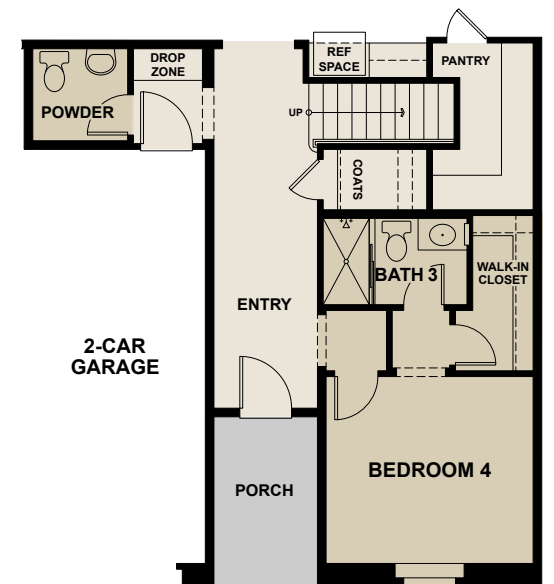


FIRST FLOOR

American Traditional
 Elevation
 (AS MODELED)



Optional
 Idea Room at Back Yard



Optional
 Junior Suite With Bath 3
 & Powder Room at Entry



Spanish



American Traditional



Country



All the

Ingredients

You'll Love in Your New Home

Handsome Exteriors

- An elegant blend of Country, American Traditional and Spanish architectural styling with siding, stone or brick accents (varies per elevation)
- Architecturally selected exterior colors for enhanced street scene
- All homes exceed California building standards
- Concrete tile roof with limited lifetime manufacturer warranty
- Front yard landscaping with weather smart irrigation system
- Front and back yard rain gutters with downspouts and side drain lines
- California lace two-coat stucco finish
- Inviting covered front porch
- Covered Outdoor Room
- 8' tall sliding glass door to back yard
- Two-car garage with storage (most plans)
- Garage interior walls drywalled and taped
- Garage door opener with two remotes
- Exterior carriage light
- Concrete walkway from driveway to side garage door



Interiors of Comfort & Convenience

- Abundance of windows provide plenty of natural light, creating a serene and spacious setting
- 9' ceilings, including second floor
- Beech cabinets with finished interiors, concealed hinges & choice of four finishes
- Washable interior wall paint
- Rounded wall corners
- Lighted ceiling fan at Great Room
- 18"x18" ceramic tile floors in Entryway, Kitchen, Dining, Powder Room, Baths & Laundry
- Handsome 4 ½" baseboards with enamel finish
- Raised two panel interior doors with brushed nickel hardware
- Laundry room with upper wood shelf & gas hookup for dryer
- All high-efficacy lighting (LED)
- Distinctive low wall at stairs with painted handrail
- Dual zone climate control with programmable thermostat (two story designs)
- White rocker switches

A Kitchen for the Resident Gourmet

- Granite slab countertops with 6" backsplash and full backsplash at range
- General Electric® stainless steel appliance package including:
 - Convection range with 4 sealed gas burners, center griddle & self-cleaning oven
 - Energy efficient ENERGY STAR® built-in dishwasher
 - Microwave hood combination
- Center island with granite slab and seating at bar
- Kohler® double compartment cast-iron white kitchen sink with disposal
- Kohler® polished chrome pullout faucet with spray nozzle
- Convenient built-in recycle center cabinet
- Spacious walk-in Pantry (most plans)
- Framed refrigerator space with recessed ice maker line
- Recessed LED canned lights

Behind the Walls & Safety

- Technology pre-wiring with enhanced RG-6 coaxial cable TV at Great Room, all bedrooms, den and loft
- CAT5e telephone wiring at Kitchen and Owner's Bedroom
- 36" media distribution center with structured wiring throughout for future networking capacity
- Pre-wired for electric vehicle charging circuit at garage
- Safety combination smoke & carbon monoxide alarm with battery back-up
- Interior fire sprinkler system throughout
- Solid core fire door from garage
- PEX plumbing water system
- Fire resistant roofing

Opulence at the Owner's Suite

- Technology pre-wiring with enhanced RG-6 coaxial cable TV at Great Room, all Bedrooms, Den and Loft
- Dual vanity sinks with granite vanity tops (to match Kitchen countertops) with 6" backsplash
- Raised height vanity cabinets
- Easy-to-clean fiberglass shower with clear or obscure glass enclosure and separate soaking tub (most plans)
- Private water closet with WaterSense comfort-height, elongated low-flow toilet
- Spacious walk-in closets with generous single and double hanging wood shelves and poles
- Linen cabinet at Owner's Bath for generous storage (some plans)
- Kohler WaterSense polished chrome bathroom fixtures
- 4 recessed LED canned lights in Owner's Bedroom

Pamper Yourself in Bedrooms & Baths

- Granite slab vanity top (to match Kitchen countertops) with 6" backsplash
- Easy-to-clean fiberglass tub & shower surrounds
- Overhead lighting in all secondary bedrooms
- Raised-panel wardrobe doors with brushed nickel hardware
- Prewire for ceiling fan in all secondary bedrooms
- Kohler® WaterSense polished chrome bathroom fixtures
- WaterSense low-flow toilet



McCaffrey EarthSense is a comprehensive program with smart environmental solutions with walkable neighborhoods and quieter, more comfortable homes that consume less energy, water and other natural resources. Just look at all the ways EarthSense makes good sense on your home buying choice at Santerra.

Energy Sense

- Third party inspection to assure energy efficiency compliance
- All homes exceed California building standards
- 220-volt pre-wire for electric vehicle or equipment charger in garage
- Cool technology concrete roof tiles that reflect heat away from the attic
- High performance insulation system: R-38 attic, R-13 roof, R-23 exterior walls & R-8 ducts
- ENERGY STAR® dual-pane windows & sliding glass doors with argon filled & low E glass
- 2x6 exterior wall system with R-23 insulation
- Dual zoned control central heating & air conditioning (two-story plans)
- Ground mounted HVAC system with energy efficiency ratings of 14 SEER & 12.2 EER
- Gas furnace with fuel efficiency rating of 93% AFUE
- .93 Energy-Efficient, Tankless gas water heater
- ENERGY STAR® programmable thermostat with multiple time and temperature settings
- Insulated hot water pipes
- R-8 insulated ducts to reduce heating & cooling loss
- General Electric ENERGY STAR® dishwasher
- All high-efficacy lighting (LED)

Water Sense

- Water saving smart irrigation control with moisture sensor to reduce water waste
- Water-wise landscaping with drought tolerant plants or Mediterranean species
- Water efficient hydrozone plant system
- Drip irrigation at shrubs & trees
- Water conserving WaterSense bathroom faucets, showerheads & toilets
- General Electric ENERGY STAR® dishwasher

Eco Sense

- Convenient built-in kitchen recycle center to help support your earth friendly lifestyle
- McCaffrey Homes recycles up to 65% of construction waste away from landfills
- Oriented strand board (OSB) engineered wood products to reduce waste and strengthen construction
- Available green friendly laminates & renewable bamboo flooring

Health Sense

- Low VOC interior wall paint, carpet & pad
- Formaldehyde free insulation & carpet pad
- A/C system with chlorine free refrigerant
- Filter in HVAC system with MERV rating of 8 to reduce indoor airborne particles
- ENERGY STAR® exhaust fan at baths & laundry
- PEX® plumbing water system

Life Sense

To help promote a healthy lifestyle Santerra neighborhood at Riverstone is anticipated to offer:

- Adventure Park, neighborhood park that is short walk or bike ride away
- Miles of hiking & biking trails with scenic outlooks
- Dog Park with separate areas for small and large breeds
- Community Farm
- The Lodge at Riverstone, a one-of-a-kind, resort-style community clubhouse/recreation center



McCaffrey Homes

For three generations, Central Valley residents have turned to McCaffrey Homes, a local family home builder with deep roots in the valley, for desirable communities, award winning designs, quality and service. Today having built over 9,000 homes, McCaffrey Homes has earned the trust and respect of homeowners year after year.

Our company has been honored with many of the community's and the building industry's highest awards, including the induction of co-founders Robert and Karen McCaffrey into the prestigious California Homebuilding Foundation Hall of Fame.

For McCaffrey Homes, "Built for a Lifetime" means more than quality homes built to last. It's about a tradition of pride, craftsmanship, and the idea of "home". We know that homes are where lasting memories are made, and so you'll find our homes in the best locations - all in welcoming, life-enriching neighborhoods, close to top-rated schools and inviting parks.

Families who purchase a McCaffrey home can rest assured they have selected a quality, well designed, energy efficient home supported by a team of professionals who will be there for you for years to come.






360 Grant Avenue
Madera, CA 93636
ph: (559) 673-7533 | McCaffreyHomes.com



RIVERSTONE
Look forward to life

 McCaffrey Homes reserves the right to change floor plans, dimensions, exteriors, specifications, included amenities, and product types without prior notice or obligations. Architectural illustrations are artist conceptions and are not necessarily to scale and are not intended to be an actual depiction of such items. Pictured homes are models with some features, furnishings and landscaping not included in the purchase price. All square footages stated are approximate. Actual square footage will vary. 01/17